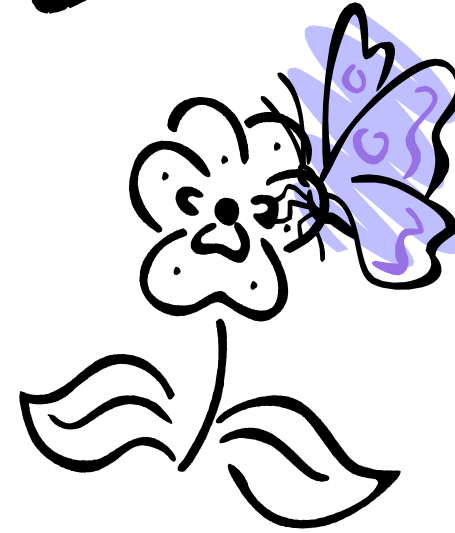


Gardens & Gables 2004



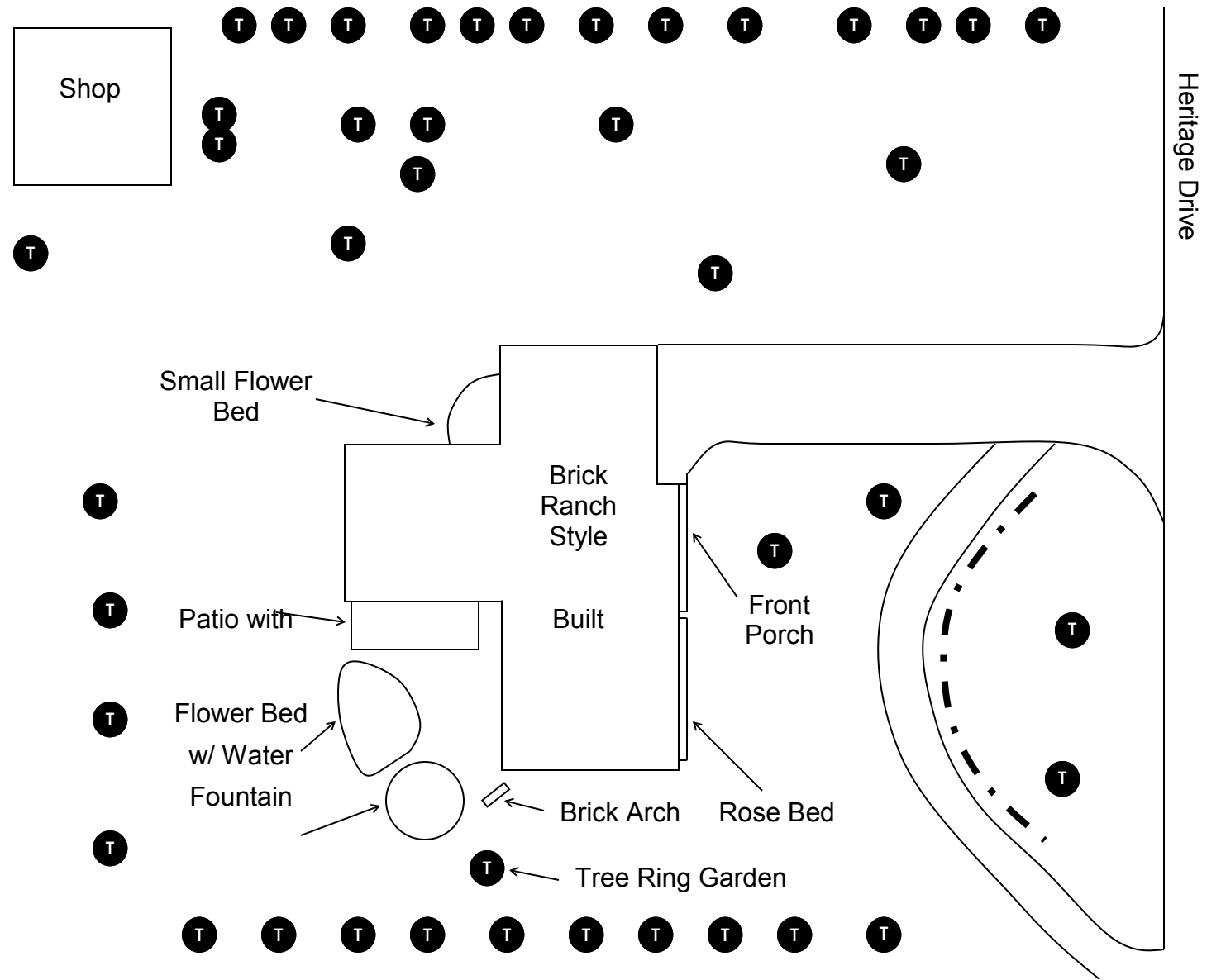
Saturday
July 10, 2004

7:30 AM—1:00 PM Tours
 10:30 AM—1:00 PM Gardening Workshops
 12:00 PM Door Prize & Raffle Drawing
 Tour Bus operates 8:00 AM—1:00 PM
 (By Advance Ticket Purchase Only)

This event will take place Rain or Shine!
A litter free event.

Richard & Sandra Foran

4620 Heritage Drive



Notes & Favorite Plants

Workshop Information

The Other Clematis

presented by Dale Lindgren, UNL Professor of Horticulture & Landscape Ecology, WCREC



The horticulture program at the University of Nebraska West Central Research & Extension Center at North Platte has historically been known for the work that was conducted on the development of chrysanthemums for garden use. However, the horticulture projects at the West Central Center now emphasize the evaluation and development of native plants and other under-utilized perennials. This workshop will discuss some unusual clematis, plus penstemon and other native plants with the audience. Examples of some of these plants will be available to view.

Container Gardening

presented by Dennis Murphy, University of Nebraska Master Gardener Volunteer

Not enough space for a garden? Is that deck too bare? Maybe you have a favorite exotic that won't last Nebraska's winter? We'll discuss the Why's and How's of gardening in containers.



How to Attract Wildlife with your Garden

presented by Ann Bartlett, University of Nebraska Master Gardener Volunteer

Your beautiful summer garden can help create a bird friendly environment in the winter. A successful winter bird refuge has three requirements: a feeding program, a water source, and provisions for shelter. This workshop will provide tips and tricks of keeping wildlife in your yard all year long. Please see the additional handout in this packet entitled: "A Winter Welcome for Wildlife".



Theme Gardening

presented by Susie Maupin, University of Nebraska Master Gardener Volunteer



Are you wanting to plant a patriotic garden? What about a moonlight garden or a pizza garden? These are just a few of the unending possibilities of theme gardens. How do you plan a theme garden? What steps should you take and how can you avoid problems? Stop by the Theme Garden workshop and learn how to get started down the theme garden path!

Herb Gardening

presented by Ruth Carson & Terry Wisdom, University of Nebraska Master Gardener Volunteers

This will be an informal workshop that will be held in the Herb Garden at the Demonstration Garden on the campus of the West Central Research & Extension Center on South Highway 83. We have included a separate insert in this packet listing the **Herbs in the Demonstration Garden**.

Workshop topics will include:

1. History of herbs
2. Hands on identification of herbs
3. Information on planning and planting an herb garden
4. Demonstration of uses for herbs
5. Methods of preserving herbs



Things to Know

- ☼ There is road construction on West State Farm Road that blocks the normal entrance to the Master Gardener Volunteer Demonstration Garden and the Workshops and Prize Drawing location. There are two alternate access locations: directly West off Highway 83 **OR** South down Tree Lane off West State Farm Road. Please use caution when traveling in this area of the tour.
- ☼ We have tried to provide you with a map (on the back) that reflects the best traveled route. Please take a minute to familiarize yourself with the map before starting the tour.
- ☼ Tour organizers have timed the tour of the 6 gardens at approximately 45 minutes of drive time and 2 1/2 hours total to complete the tour depending on how long you stay, look and visit at each site. Estimates used were 15-20 minutes per site.

Acknowledgements

Raffle and Door Prize Donors

Ben Franklin
The Garden Glove
Huebner's Nursery Lawn & Garden Center
Keep North Platte and Lincoln County Beautiful
McFarland's Greenhouse
True Value Home & Outdoor Super Center
Turnbull Landscaping, Inc.
Quality Lawn Care
Westfield Floral
Foster and Gertrude Broge Trust
Sara Aden
Linda Broge
Kaycee Dye
Cecelia Lawrence
Dave Rowe
North Platte Public Library Staff
North Platte Public Library Foundation Board

Supporters and Volunteers

First National Bank
KNOP-TV
KX104 Radio
Keep North Platte and Lincoln County Beautiful
City of North Platte
University of Nebraska
— West Central Research & Extension Center
— Master Gardener Volunteer Program
— Cooperative Extension in Lincoln & McPherson Counties
Ann Bartlett
Judy Betty
Chad Boehlke
Ruth Carson
Paul Cartwright
Julie Colling
Stephen Granger
Dale Lindgren
Susie Maupin
Dennis Murphy
Gloria Piper
Marvin & Chris Rankin
Terry Wisdom
North Platte Public Library Staff
North Platte Public Library Foundation Board

...and everyone who purchased tour and raffle tickets for this event!

A special thank you to the home owners who have allowed us to peek into their beautiful gardens and willingly share them with us.

The proceeds from this event benefit the North Platte Public Library Foundation, a Mid-Nebraska Community Foundation Fund.
The North Platte Public Library Foundation exists to enhance the facility and services of the North Platte Public Library.

Richard & Sandra Foran

4620 Heritage Drive



Home Owner Comments

Dick purchased the house in 1976. When he moved into the house there nothing but weeds and corn field around it. He put in the lawn and underground sprinkler system. We married in 1980 and it has been a work in progress and a labor of love ever since. We added onto the house in 1981 and put in the patio at the same time. Dick built the Gazebo in 1983. I have loved Gazebos since I was a child and one day I brought home a picture and asked if he could build it. He did and it turned out wonderfully. The Gazebo has seen two weddings and many cherished moments. In 1989 he built the shop in the back yard. We've replaced shingles, hung new exterior doors, recently painted the shop, and are currently in the process of bricking the gables and siding the soffit and fascia. The yard is an ongoing process. We have almost eighty (80) trees and shrubs, and three (3) flower beds. The front flower bed is home to nine (9) rose bushes. Wildlife is abundant here, but the neighborhood dogs try to

Architect Comments by Stephen Granger, AIA

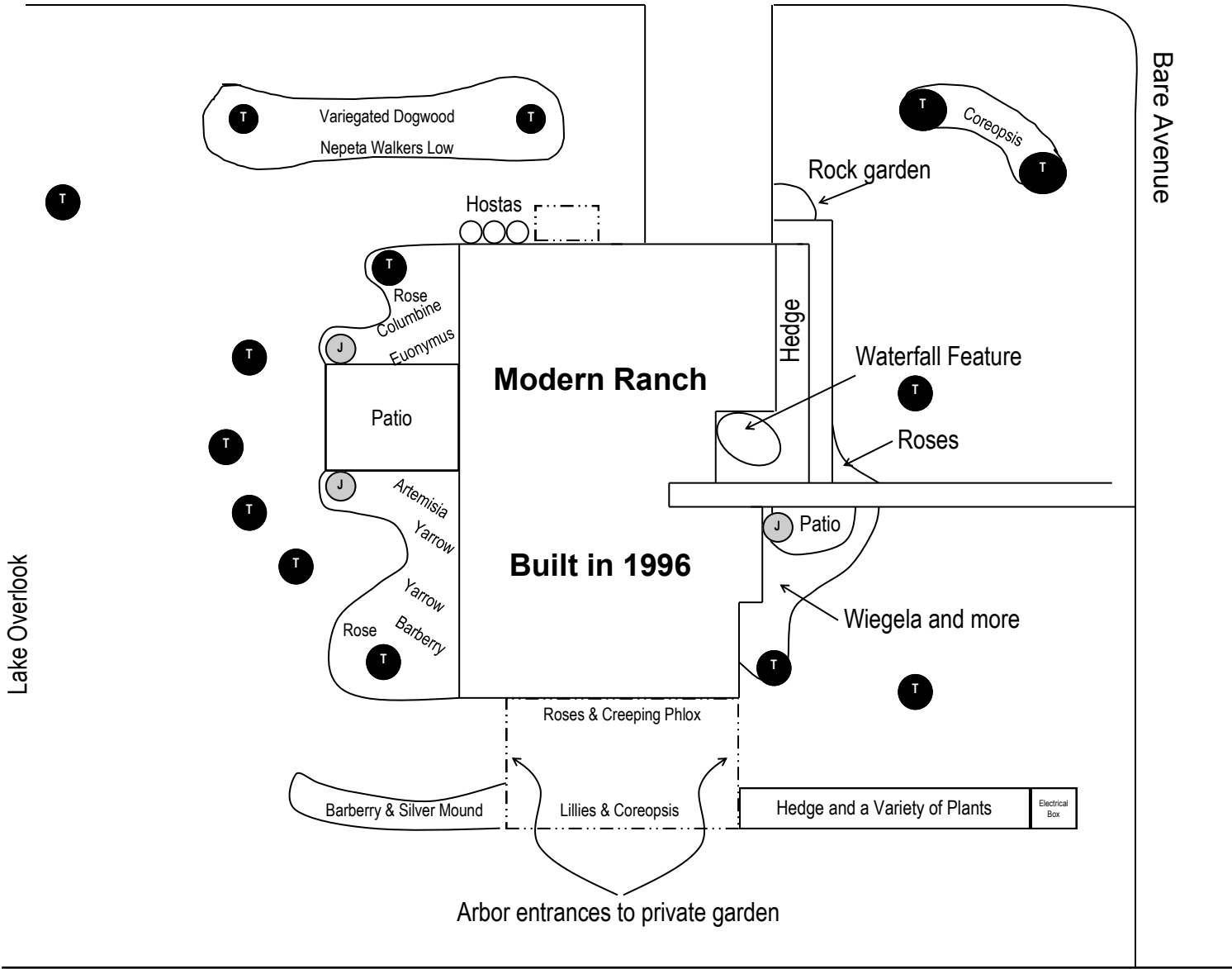
Richard and Sandra are the original homeowners and are proud of the transformation they have accomplished transforming this original farm ground into a home. The home has offered more than shelter from the elements; Richard calls his home improvement progress "the best bad day therapy anyone could ask for". Richard and Sandra have completed several improvements to their house including the Gazebo. According to Richard, a deal was sealed when Sandra said she would buy him a table saw if he would build a Gazebo. Richard's Dad told him that he would end up with more scrap wood than Gazebo by the time he was done, and his Dad was right. Richard also made the rocking horse weather vane which adorns the top of the Gazebo. The rocking horse was purchased during a west coast vacation and traveled back to North Platte and is performing a perfect job of directing the winds. You enter the property by way of the circular drive. A mature shade tree is centered in front of the all brick ranch style home. A tire swing provides plenty of entertainment for their grand children. To the south of the house is the hand made gazebo, which you enter through brick archway, also made by Richard. They enjoy the 75 plus trees that they have planted to border different areas of the property

Jerry & Norma McConahay

1102 South Bare Avenue



Sunset Drive



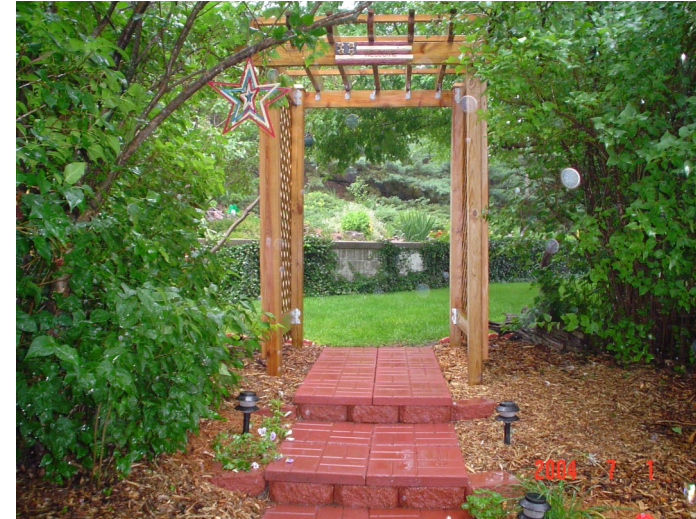
Lake Overlook

Bare Avenue

Notes & Favorite Plants

Carrel & Gladys White

602 Tomahawk Road



Home Owner Comments

We enjoy the birds, animals and open spaces that comes with country living. Several species of birds fly through the neighborhood and stop by for a drink, seed and maybe a bath. Some also call our yard "home" while they live in one of our bird houses and start a family. We also have rabbits, squirrels, skunks, possums and have counted seven (7) deer in the yard at one time. Late at night you might be awakened by the howl of a coyote or two just over the hill. With the fun of country living also comes the work of a large yard. We have planted most everything that is in the yard. The squirrels are always burying black walnuts from the neighbors tree and we did let one of those trees grow. We enjoy the iris with the contrast of the lamb's ear and red barberry bushes. In the back yard we always plant lots of annuals. We both like red geraniums, they are hardy and make a bright showing. There is always a project whether it is replanting an old bush or tree, or starting a new flower bed. The passing of each season is enjoyed from our beautiful view of the valley and the city's twinkling lights. We hope you enjoy your short visit and get a feel of what we enjoy all year long.

Architect Comments by Stephen Granger, AIA

Carrel and Gladys have lived in this split-level home off and on over the past 40 years. The property was used as rental property during some of those 40 years when Carrel and Gladys traveled with business. When the house was originally built, it was one of the first in the area. The house provided a beautiful view down to the river valley. Over the years the area trees matured and have blocked some of the views, however, the protection from the elements was welcomed. The house is on a steep corner lot providing several landscaping challenges for the White's. The White's have provided a beautiful front perimeter of landscaping along with wood post and rail fence system. Beyond the fence system is a wide-open area of well-maintained lawn that is softened by additional landscaping along the perimeter. The back yard provides a quiet get away area to relax after a long day of working hard.

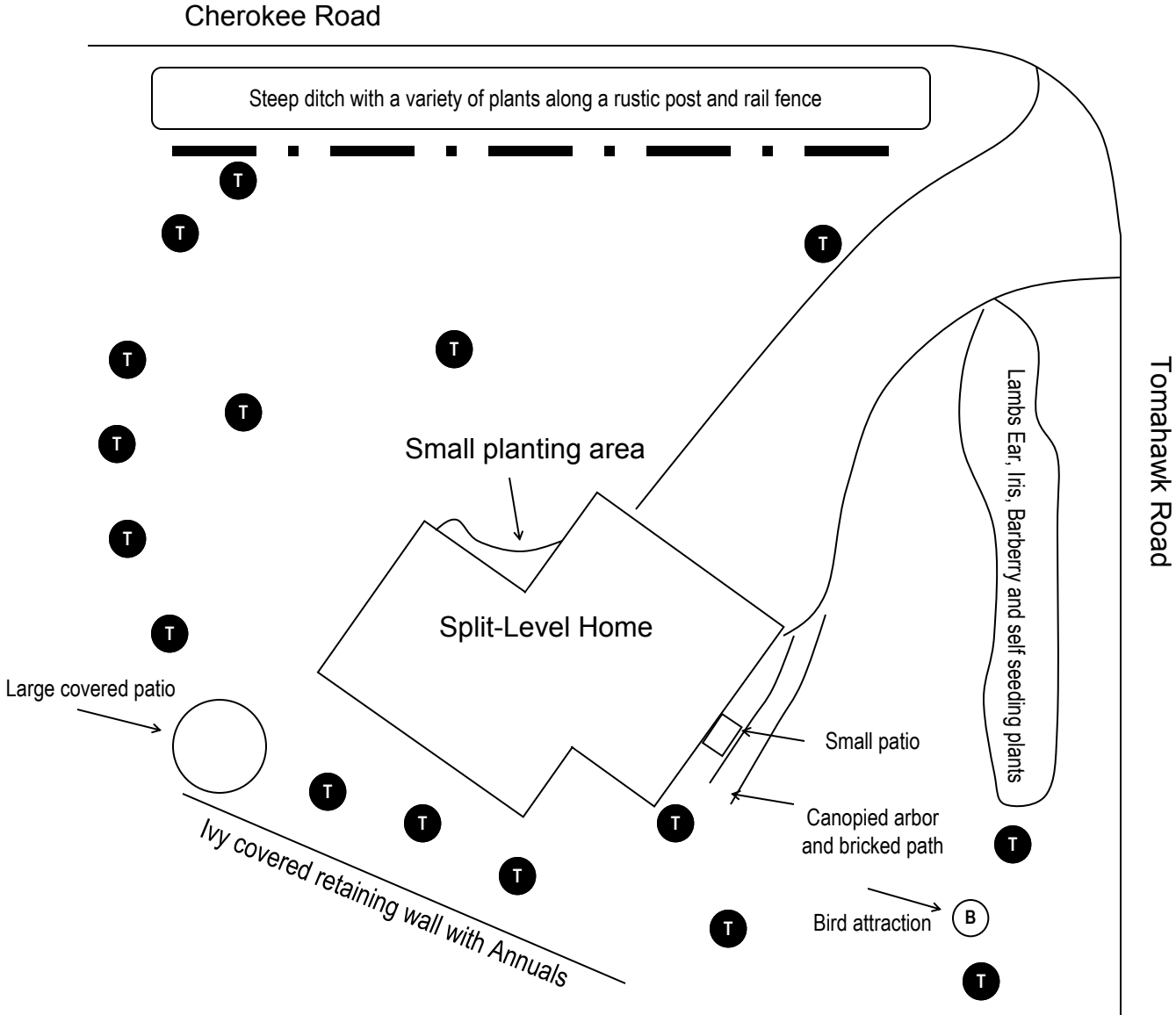
Carrel & Gladys White

602 Tomahawk Road



Jerry & Norma McConahay

1102 South Bare Avenue



Notes & Favorite Plants



Home Owner Comments

Our home is relatively new. Jerry and I both love the outdoors and have worked hard to soften the straight angles of the house with several curving berms. It seems we are always outside working on our yard, at least Jerry is, but we love it so you do what you love. Our landscaping reflects both of our styles. Wild life visit the backyard and we are entertained with the birds visiting our feeders. Since the landscape is young we are patiently waiting for our trees and plants to mature more and fill in their respective areas. Our desire is to have color and texture in our yard all year long.

Architect Comments by Stephen Granger, AIA

Jerry and Norma McConahay have the newest home on the tour and provide a beautiful start to a corner lot oasis. The home is a modern style ranch home, with steeper pitched roofs with gables and double gabled design features. The home's exterior is partially brick and siding. The home is relatively new, and the trees haven't provided much shade yet, but the landscaping frames the site with style and has the ability for mature tree growth and shade. Visitors are greeted by a singlewide set of steps from the east. On the front porch there is a seating area to the south, which looks over to their pond featuring a wonderful waterfall. The pond is full of wildlife and provides some soothing background sounds while relaxing on the front brick patio. On the south end of the house, vinyl white fencing with a couple of entry arbors enclose a more private garden area. The back yard slopes down to a small lake, which is shared by the area homeowners. The lake is hidden from the road and provides a superb back drop to an evening in Jerry and Norma's backyard.

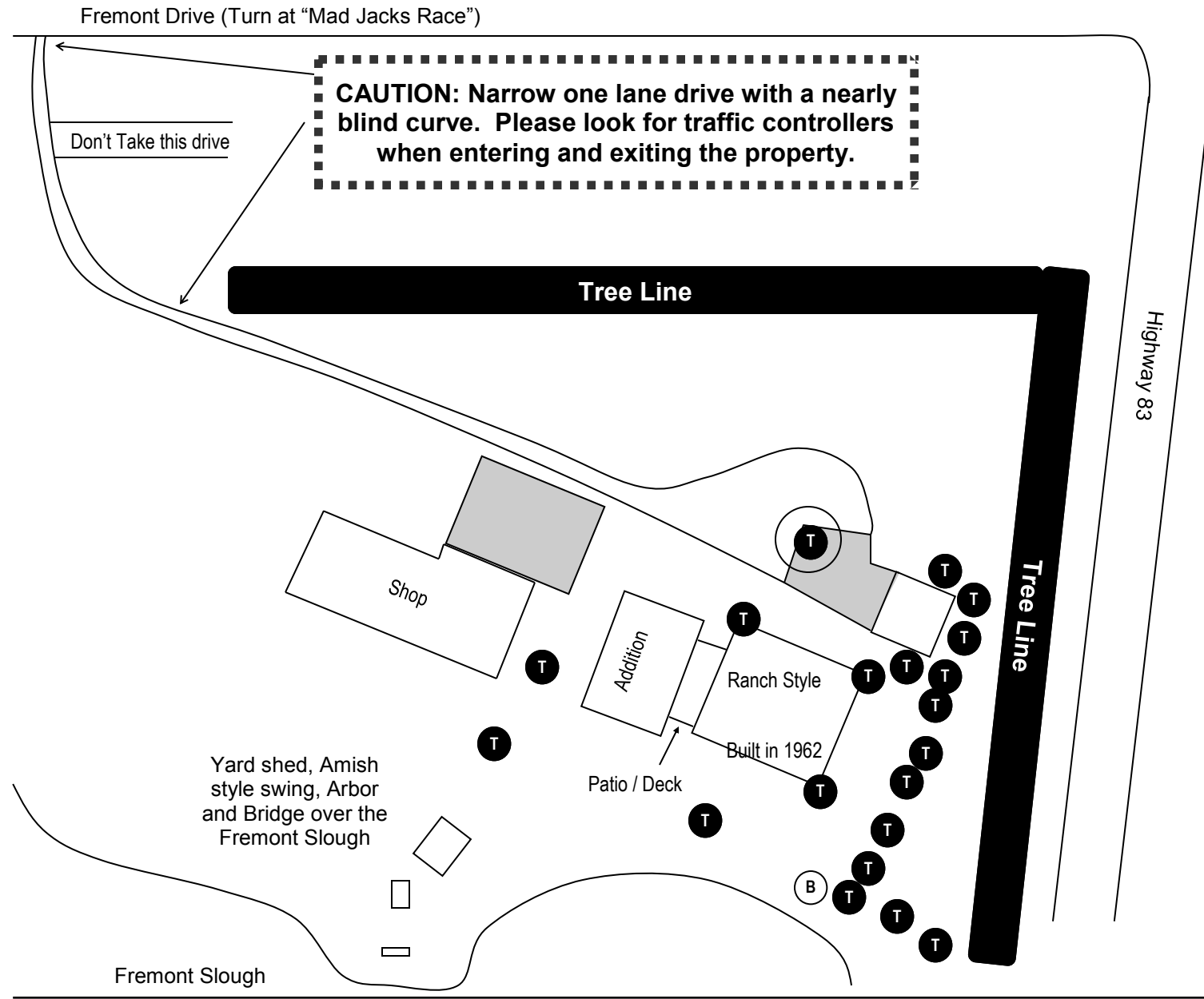
Bob & Mary Mitchell

206 West



Jim & Linda Thompson

502 Prairie Road



Home Owner Comments

Indian Hills was blossoming when our home was built by the original owner. We lived a couple of miles away and used to take Sunday drives through the neighborhood, dreaming of one day living here. Little did we know that the owner would be transferred and our current home would become too small when we got the news that our six-month old adopted daughter was about to enter our lives. Negotiations took over six months, but we finally purchased our “dream home”, and it has been that since the day we moved in. Some room functions have changed a little, but it still fits us like a glove.

The landscape has grown from a small patch of spotty grass with a deeply rutted dirt bike tracks in the back to nearly an acre of grass, two ponds and several mostly self-sufficient planting areas. We moved the “boulders” into our yard a few years ago and the pond has evolved from there. Jim had to get a few fish “just for fun”. The first year he moved them to a fish tank in the garage, and took care of them daily through the winter and into the next spring. We now have our own Sea World with somewhere over sixty (60) fish that live in the pond year around.

My planting techniques would probably drive a professional gardener right over the edge, but I just plant what we like. Jim love marigolds, so we always have to have them. The daisies just come up by themselves, and the annuals may change from year to year, but I have my favorites; like geraniums, petunias, and pansies. I have made every gardening mistake in the book, but it’s pretty much the way we want it now.

Things have changed a lot through the years, and now it’s back to Jim and I, our two golden

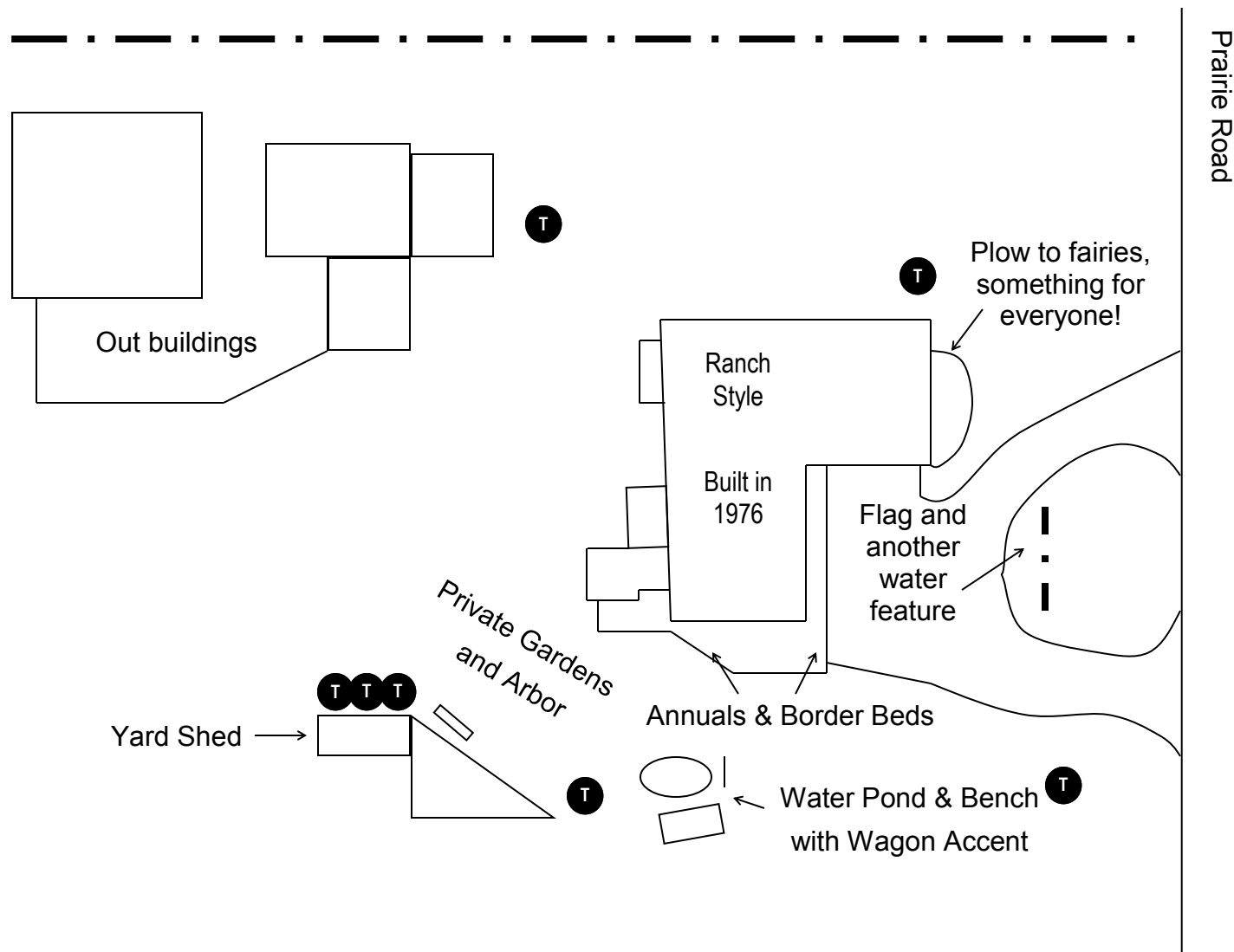
Architect Comments by Stephen Granger, AIA

Jim and Linda have used a combination of old and new to landscape their beautiful ranch style home. Entering the circular drive, notice a water garden in the foreground. This garden displays old fence, rocks, and timber along with an old water pump and bucket protected by a carved crane. An old antique railing system with shortened balustrades complete with weathered white paint, frames the front entry of the home. On the side of the front porch is a similar style antique chair planter. To the south of the house is a rock garden with a small pond and waterfall. Beyond the pond is a settler’s wagon, which is a wonderful place for several potted plants. In the back yard, there is a wide-open view to the west, which is fitting for this western style landscaping theme. There is a large shop located in the back of the

Notes & Favorite Plants

Jim & Linda Thompson

502 Prairie Road



Bob & Mary Mitchell

206 West Fremont Drive



Home Owner Comments

Our home is always busy. We operate a business out of our home and it is close to Highway 83. Despite its location, we have provided a country feel and sense of seclusion to our home. The pond in the back yard created by the Fremont Slough gives us a feeling peace and the trees help to soften the traffic sounds and visually shield us from the vehicles on the highway. We have a mix of new landscaping areas and young plants with mature trees and wildlife brush areas. Be sure the check out the back yard of our property as it is one our favorite features and enjoyed settings.

Architect Comments by Stephen Granger, AIA

Bob and Mary are the second homeowners of this multiple acre site. The original home is a contemporary single story ranch home with blond split face roman brick. The house has been added onto on the west side and a couple of out buildings have been built. The house is hidden among several mature trees and a winding single lane drive to the house makes one wonder if you have made a wrong turn. Don't worry, you haven't. The property has been well planned. The trees provide several visual barriers and sound filtration from the adjacent Highway 83. The Mitchell's have also installed a fountain in the pond, which is fed by the Fremont slough. Fremont Slough runs across their property. The fountain also provides additional background noise against the traffic. The estate offers several different locations for relaxation, from Amish built benches to Adirondack chairs, and even a bridge over the slough to cool off your feet. A very unique feature of the acreage is a hobbit carved out of an existing tree trunk that the shop was built around. The property is full of lots of different wild life and protecting the recently planted landscaping is a challenge.

Notes & Favorite Plants